

Round grippers, Form M

Item description/product images



Description

Material, version:

Form M tool steel with carbide serrations, black oxidised.

Note:

Grippers and inserts are ideal for use in clamping arms, gripping systems, clamping fixtures, clamping jaws and self-aligning pads. The use of grippers allows the transfer of very high torque values and above average grip, even with hard materials and surface irregularities.

Form O: The abrasive diamond surface is bonded firmly to the base. It is ideally suited to supporting smooth or slippery applications with a minimum of clamping pressure. This allows the diamond particles to get a firm grip on a very small area with minimum damage to the surface.

The diamond surface offers excellent wear resistance.

Form P: The polyurethane surface is vulcanised firmly to the ball. It is abrasion-resistant and does not discolour. It offers optimum protection against damage to delicate surfaces. The pearl-like surface gives a firm grip and allows air to escape so as to prevent any suction effect between the contact surface and the self-aligning pads.

Grippers and inserts can be fitted in the following self-aligning pads:

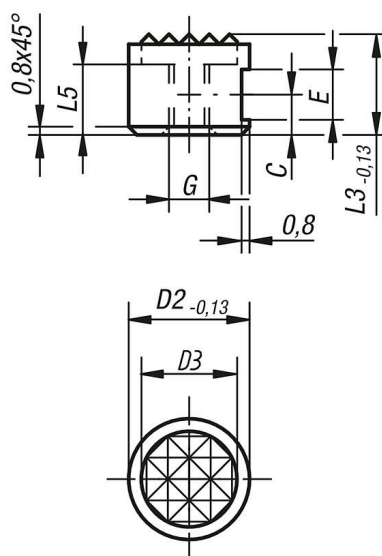
Order No. B0150.117X022 up B0150.936X036

Order No. B0154.110X015 up B0154.924X100

Order No. B0156.120X030 up B0156.924X080

Drawings

Form M
carbide steel
diamond grip insert



Overview of items

Order No.	G	D2	L3	Form	D3	L5	C	E
B0169.10107	M5	10	10	M	7,9	6	4,5	4,75
B0169.10127	M5	10	12	M	7,9	8	6	4,75
B0169.12107	M5	12	10	M	9,5	6	4,5	4,75

Round grippers, Form M

Overview of items

Order No.	G	D2	L3	Form	D3	L5	C	E
B0169.12127	M5	12	12	M	9,5	7	6	4,75
B0169.16107	M6	16	10	M	12,7	6	4,5	4,75
B0169.16127	M6	16	12	M	12,7	8	6	4,75
B0169.20107	M6	20	10	M	15,9	6	4,5	4,75
B0169.20127	M6	20	12	M	15,9	8	6	4,75
B0169.25107	M6	25	10	M	19	6	4,5	4,75
B0169.25127	M6	25	12	M	19	8	6	4,75