

## Round inserts, Form P

### Item description/product images



### Description

#### Material, version:

Stainless steel with polyurethane surface, Shore hardness 60°.

#### Note:

Grippers and inserts are ideal for use in clamping arms, gripping systems, clamping fixtures, clamping jaws and self-aligning pads. The use of grippers allows the transfer of very high torque values and above average grip, even with hard materials and surface irregularities.

Form P: The polyurethane surface is vulcanised firmly to the ball. It is abrasion-resistant and does not discolour. It offers optimum protection against damage to delicate surfaces. The pearl-like surface gives a firm grip and allows air to escape so as to prevent any suction effect between the contact surface and the self-aligning pads.

Grippers and inserts can be fitted in the following self-aligning pads:

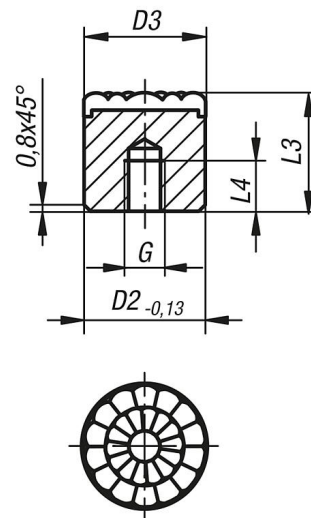
Order No. B0150.117X022 up to B0150.936X036

Order No. B0154.110X015 up to B0154.924X100

Order No. B0156.120X030 up to B0156.924X080

### Drawings

Form P  
stainless steel insert,  
PUR surface



### Overview of items

| Order No.   | Form | D2 | L3 | L4 | G  |
|-------------|------|----|----|----|----|
| B0169.08126 | P    | 8  | 12 | 6  | M4 |
| B0169.10126 | P    | 10 | 12 | 6  | M5 |
| B0169.12126 | P    | 12 | 12 | 6  | M5 |
| B0169.16126 | P    | 16 | 12 | 6  | M6 |
| B0169.20126 | P    | 20 | 12 | 6  | M6 |
| B0169.25126 | P    | 25 | 12 | 6  | M6 |

## Round inserts, Form P

### Overview of items

---